



*he sells!*



*he sells!*



*he sells!*

*Bull Sale*

**FEBRUARY 14, 2024**

1 p.m. • At the Ranch • Houghton, SD

**50** Simmental & SimAngus™ Bulls

# TRAXXING SIMMENTALS

# Welcome!

**BUILDING  
BLOCKS**  
*for success*



*The Traxinger Family, pictured, back, L to R Brittney, Brandon, Jerry and Michael, (front) Mike, Ryker, Rylee and Terri*

Traxinger Simmental will be hosting our Annual Bull Sale Wednesday, February 14th 2024 at 1PM.

Another year of changing weather from one extreme to the next, and then a beautiful fall / winter. This year's markets have rewarded you with good returns both grain and cattle. Now's the time to position your cattle herds with the genetics to produce those extra pounds necessary to keep up with the increase in input costs. In the 50 plus years I've been raising Simmental cattle not once have they bought my feeders on their EPD profile. I've always been paid BY THE POUND. Yes we as cattlemen need to use the tools available, but if they don't contribute to your take home pay, what true value are they? We use them, but I still want true performance in the end, not a high EPD that a year later has dropped 25 to 35%. We have a herd that doesn't want to give up on 700lb. WW and higher, and a rare one over 900. In my mind, frame scores have gotten dangerously SMALL.

This year's offering is similar to other years. There will be 50 bulls reds and blacks, most homo-polled and blacks most are homo-black. Most are purebreds, with a couple Simm-Angus. Throughout the years you may have noticed that the number of bulls we offer hasn't changed even though we run 40 more cows. Simple answer— it increases the quality of the bulls we offer you.

DV Auction will assist us and their support group can be reached at 402-316-5460. If you have any questions please visit with them prior to the sale and familiarize yourself with the process. This does require high speed internet.

Three of my great friends will be helping again this year. Jeff Thomas 406-581-8859, Todd Fink 701-240-7711 as well as Perry Thomas 701-751-1177. They all have a great eye for cattle and will give you an honest appraisal of any animal.

I need to thank my family for letting me live a little boys dream from years ago to raise Simmental cattle. Without their help I'd of checked out of this business a couple year's back. That being said we as a family need to figure out if we want to continue in the future with the Annual bull sale or go to some other format. It requires a tremendous amount of time and energy from family and several other great friends. So all I can say is things could be different next year.

Like always we encourage you to stop in before the sale and kick through the offering and let us help with your selection. Coffees on, and the BS might get deep but we do appreciate everyone who stops and wants to talk cattle. Please consider our invite.

Remember sale day is February 14th 2024 at 1:PM Valentine's Day. Mark your calendar and let us be your host for our Annual Simmental Bull Sale.

We want to thank all those people who have been customers, friends, neighbors or a part of our lives in some form or another. The cattle are the connection but the friendships that we have made throughout the years, are the GREAT rewards of doing this.

THANK-YOU, we are truly Blessed!



**RANCH • 605-885-6347**

**MIKE & TERRI TRAXINGER • 605-294-7227**

**MICHAEL TRAXINGER • 605-377-4110**

E-mail: [mtrax@nvc.net](mailto:mtrax@nvc.net)

**[www.TraxingerSimmental.com](http://www.TraxingerSimmental.com)**

**DVAuction**  
DISCOUNTING VALUATION AUCTIONS

**TRAXINGER**

# TRAXINGER SIMMENTALS

**FEBRUARY 14, 2024 • 1 P.M.**

TRAXINGER SIMMENTALS • 1176 406TH AVE. • HOUGHTON, S.D. • 1 P.M.

## SALE DAY PHONES

RANCH .....	605-885-6347
JEFF'S CELL .....	406-581-8859
MICHAEL'S CELL.....	605-377-4110
MIKE'S CELL.....	605-294-7227

## DIRECTIONS:

From Hecla: 6S, 2E, 2S on Hwy 37.

From Groton: 21N and from Houghton 5 miles straight east do not take the curve.

## SALE PERSONNEL:

Chisum Peterson, Auctioneer .....	605-730-4214
Jeff Thomas, Farm & Ranch Guide.....	406-581-8859
Perry Thomas, Special Assignment.....	701-751-1177
Todd Finke, Special Assignment.....	701-240-7711

## HOTEL ACCOMMODATIONS:

For hotel accommodations, contact Mike..... 605-294-7227

### COLOR & POLLED GUIDE

**Homozygous Black** - All calves will be black if mated to a black or non-dilutor red cow.

**Heterozygous Black** - If mated to a non-dilutor red cow  $\frac{1}{2}$  the calves will be black and  $\frac{1}{2}$  will be red.

**Homozygous Polled** - All calves will be polled.

**Heterozygous Polled** - If mated to a horned cow  $\frac{1}{2}$  of the calves will be polled and  $\frac{1}{2}$  will be horned.

**Non-Dilutor** - If mated to a heterozygous black cow,  $\frac{1}{2}$  the calves will be black and  $\frac{1}{2}$  will be red. If mated to a homozygous black cow, all calves will be black.

**Dilutor** - If mated to black cow, you might get a grey calf.

## IMPORTANT NOTES:

- Feeding arrangements available.
- Delivery options available.
- All cattle sell under the standard terms and conditions of the American Simmental Association. Available upon request. At no time shall Traxinger Simmentals be responsible for more than the purchase price of the animal.
- We will be selling 100% possession and reserve the right to retain 1/3 semen interest on all bulls selling, with the option to collect 100 units for in-herd use only. This will be done at the seller's expense and the buyer's convenience. Please contact me if you have any questions.
- Traxinger Simmentals will not be responsible for any lost or stolen items or liable for any personal injury.
- An Insurance Representative will be available on sale day. We strongly encourage the buyer's to take insurance at least through the first breeding season. Full liability is assumed by the buyer when the gavel falls. Traxinger Simmentals is not responsible for injury or accidental death.
- Complimentary lunch will be served beginning at noon.

# HERD BULLS & REFERENCE SIRES



KBHR Honor



Love Boy



Rode Powerhouse



Colorado Bridle Bit



KBHR Global



TRAX Bull Dog



TRAX Red River



Red Rock Bridle Bit



Rockin H Captivate





**L01**

**L01** **TRAX L01** BD: 1/9/2023

Color	%Sim	Act. BW	205	P/S
B	PB SM	65	694	P

WELSHS DEW IT RIGHT067T  
**ES RIGHT TIME FA110-4**  
 ES A110  
**TRAX L01** - 4263455  
 JBS BIG CASINO 336Y  
**MISS DAISY 660D**  
 129Y

EPDs	
CE	10.5
BW	3.2
WW	86.5
YW	137.4
MCE	5.4
Milk	16.3
MWW	59.3
API	128.4
TI	79.7

Homo Black Homo Polled son of ES Right Time. L01 is a long bodied calf with extra height. He was a twin that has done real well. His dam Miss Daisy, is a Big Casino daughter that could be the biggest cow on the farm. Big and stout.



**L03**

**L02** **TRAX L02** BD: 2/10/2023

Color	%Sim	Act. BW	205	P/S
B	PB SM	65	769	P

HOOK'S BOZEMAN 8B  
**COLORADO BRIDLE BIT E752**  
 BRIDLE BIT MISS B452  
**TRAX L02** - 4263454  
 WS PROCLAMATION E202  
**TRAXS PROCLAMATION J174**  
 TRAXS MISS WINDSOR F872

EPDs	
CE	17.2
BW	-3
WW	76.5
YW	114.7
MCE	8.4
Milk	33.3
MWW	71.3
API	160.5
TI	90.9

Homo-Polled Homo-Black son of the Colorado bull. Potential heifer bull candidate with a good set of EPD's. These Colorado sons are put together with a balance phenotype. Out of a first calf heifer that posted a WW of 769. To ratio 100 and a BW ratio of 80.

**L03** **TRAX L03** BD: 2/15/2023

Color	%Sim	Act. BW	205	P/S
B	PB SM	78	816	P

HOOK'S BOZEMAN 8B  
**COLORADO BRIDLE BIT E752**  
 BRIDLE BIT MISS B452  
**TRAX L03** - 4263453  
 WS PROCLAMATION E202  
**TRAXS PROCLAMATION J181**  
 .TRAXS MISS ELEVATE F801

EPDs	
CE	16
BW	-1
WW	88.3
YW	131.7
MCE	8.9
Milk	35.3
MWW	79.2
API	156.8
TI	95.3

Homo-Polled Homo Black. Another Good Colorado calf with a powerful set of EPD's. L03 posted 12 traits in the top 25% and out of a first calf heifer. Colorado does so many things right, meat and muscle in a complete package. Dams ratios of 106 with a 816 WW. You could say that's getting it done.

**L04** **TRAX L04** BD: 2/15/2023

Color	%Sim	Act. BW	205	P/S
R	PB SM	64	690	P

THSF LOVER BOY B33  
**ROCKIN H CAPTIVATE J75**  
 ROCKIN H MS.CAROLINA  
**TRAX L04** - 4263452  
 GW MAJOR MOVE 590E  
**TRAXS MAJOR MOVE J153**  
 TRAXS PENDELTON C552

EPDs	
CE	14.5
BW	-1.9
WW	83.5
YW	124.7
MCE	7.7
Milk	29.2
MWW	70.7
API	145.5
TI	88.2

Homo-Polled Nondilutor. L04 is one of the first Captivates we will offer. Captivate was the \$95000 bull that was the highlight of red bulls two years ago. L04 is out of a first calf Major Move daughter who is a picture perfect female. This guy is moderate framed with a excellent muscle pattern.



## L05

### TRAX L05

BD: 2/17/2023

Color	%Sim	Act. BW	205	P/S
B	PB SM	84	761	P

HOOK'S BEACON 56B  
**KBHR HONOR H060**  
 WS MISS SUGAR C4  
**TRAX L05** - 4263451  
 COLORADO BRIDLE BIT E752  
**TRAXS COLORADO J173**  
 TRAXS MISS PROCLAMATION G964

EPDs	
CE	15.4
BW	-0.4
WW	85.1
YW	129.5
MCE	8.6
Milk	31.5
MWW	73.8
API	170.6
TI	96.3

Homo-Polled Homo Black. L05 is a unique package, an Honor out of a first calf Colorado daughter. If you live by EPD's this is the one, 14 traits in the top 25%. Both Honor and Colorado throw the muscle pattern we really like, big butt, strong top and no breaks. Colorado females are getting the job done.



## L06

### TRAX L06

BD: 2/17/2023

Color	%Sim	Act. BW	205	P/S
B	PB SM	86	775	P

HOOK'S BOZEMAN 8B  
**COLORADO BRIDLE BIT E752**  
 BRIDLE BIT MISS B452  
**TRAX L06** - 4263450  
 WS PROCLAMATION E202  
**CABLES MS PROCLAMATION 628J**  
 CABLES 948 628D

EPDs	
CE	14.6
BW	0.2
WW	87.9
YW	131
MCE	8
Milk	34.8
MWW	78.5
API	156.2
TI	93.8

Homo-Polled Homo-Black. My son bought this Proclamation daughter from the Cables in South Dakota. This combination of Colorado x Proclamation just seems to click. The 628J cow has a WW ratio of 101 on her first calf, not to mention L06 has 11 traits in the top 25% for EPD's.

## L08

### TRAX L08

BD: 2/22/2023

Color	%Sim	Act. BW	205	P/S
B	PB SM	86	756	P

HOOK'S BOZEMAN 8B  
**COLORADO BRIDLE BIT E752**  
 BRIDLE BIT MISS B452  
**TRAX L08** - 4263448  
 ART G906 RODE'S POWER HOUSE  
**TRAXS POWER HOUSE J137**  
 MISS TRAXS B460

EPDs	
CE	13.5
BW	0.5
WW	79.5
YW	118.1
MCE	7.8
Milk	32.4
MWW	71.9
API	148
TI	86.9

Homo-Polled Homo-Black. One of the first Colorado son's out of the power bull, Rode Powerhouse. We bought Powerhouse because of his performance and his sheer size. Too many cattle are just too small for us and Powerhouse gives us that dimension to maintain a 6+ frame. L08 is a bigger bull but still carries Colorado's muscle pattern.

## L10

### TRAX L10

BD: 2/24/2023

Color	%Sim	Act. BW	205	P/S
R	PB SM	74	698	P

THSF LOVER BOY B33  
**ROCKIN H CAPTIVATE J75**  
 ROCKIN H MS.CAROLINA  
**TRAX L10** - 4263446  
 BRIDLE BIT RED ROCK G9124  
**TRAXS RED ROCK J180**  
 TRAXS MISS BULLRTPROOF G926

EPDs	
CE	16.4
BW	-1.6
WW	89.1
YW	133.5
MCE	8.7
Milk	26.2
MWW	70.5
API	156.7
TI	96.5

Homo-Polled Nondilutor. Another interesting mating, a Captivate out of Red Rock daughter. Potential heifer bull with added performance. L10 is out of a first calf heifer and has 12 traits in the top 25% for EPD's. He's not the biggest calf in the pen but makes up for it with a great muscle pattern.



**L12**

**L12**

**TRAX L12**

BD: 3/3/2023

Color	%Sim	Act. BW	205	P/S
B	PB SM	78	741	P

HOOK'S BEACON 56B  
**KBHR HONOR H060**  
 WS MISS SUGAR C4  
**TRAX L12** - 4263444  
 TJ TEARDROP 783F  
**TRAXS TEARDROP H046**  
 MISS TRAXS B449

EPDs	
CE	15
BW	-0.4
WW	81.6
YW	124.1
MCE	9.4
Milk	29.3
MWW	69.8
API	160.2
TI	89.7

Homo-Polled Homo Black. The only baldy in the pen, and darn good one. I've like this guy from the day he was born and nothing has changed. He carries himself like a bull with some swagger and has all the right pieces in the right place. The cow families behind him are pretty powerful.

**L14**

**TRAX L14**

BD: 3/5/2023

Color	%Sim	Act. BW	205	P/S
B	PB SM	82	723	P

CDI INNOVATOR 325D  
**WHF INNOVATOR H548**  
 WHF BLACKHAWK 548E  
**TRAX L14** - 4263442  
 TJ POWER GRID 363Y  
**TRAXS POWER GRID J154**  
 R511

EPDs	
CE	8.5
BW	2
WW	80.4
YW	121.4
MCE	5.2
Milk	26.5
MWW	66.5
API	133.7
TI	81.2

Homo-Polled Homo-Black. The first calf out WHF Innovator bull. He's moderate framed with a ton of muscle out of a first calf heifer. Still weaned an impressive 723 pounds.

**L15**

**TRAX L15**

BD: 3/5/2023

Color	%Sim	Act. BW	205	P/S
R	PB SM	74	656	P

THSF LOVER BOY B33  
**ROCKIN H CAPTIVATE J75**  
 ROCKIN H MS.CAROLINA  
**TRAX L15** - 4263441  
 KS LITTLE JOHN C85  
**TRAXS MISS L JOHN G933**  
 TRAXS WHISKEY RIVER E774

EPDs	
CE	12.9
BW	1.2
WW	93.2
YW	139.1
MCE	7.8
Milk	30.9
MWW	77.3
API	142.1
TI	89.9

Homo-Polled Nondilutor. L15 is a Captivate son that's a twin to a heifer. The dam G933 Little John daughter raised both and produced 1264 lbs of calf. Not a big fan of twins but when a cow can raise this type of weight, imagine what a single calf would weigh. G933 cow has ratios of 103 WW and 115 YW on 3 calves.

**L16**

**TRAX L16**

BD: 3/6/2023

Color	%Sim	Act. BW	205	P/S
B	PB SM	84	756	P

KOCH BIG TIMBER 685D  
**TJ HEISMAN 388F**  
 TJ 67D  
**TRAX L16** - 4263440  
 COLORADO BRIDLE BIT E752  
**TRAXS COLORADO H057**  
 TRAXS MISS A349

EPDs	
CE	11.7
BW	0.5
WW	75.8
YW	117.4
MCE	7.3
Milk	27.4
MWW	65.1
API	153.9
TI	85.5

Homo-Polled Homo-Black. A TJ Heisman son, that's a little larger bull that on last test, was gaining 3.86 lbs/day. Not the big standout in the pen but just a good all around well muscled bull.





**L18**

**L17**

**TRAX L17**

BD: 3/6/2023

Color	%Sim	Act. BW	205	P/S
B	PB SM	84	757	P
HOOK'S BEACON 56B				
<b>KBHR HONOR H060</b>				
WS MISS SUGAR C4				
<b>TRAX L17</b> - 4263439				
TJ TEARDROP 783F				
<b>TRAXS TEARDROP H066</b>				
TRAXS RIDDLER E769				
EPDs				
CE	14.2			
BW	0			
WW	86.6			
YW	133.5			
MCE	8.8			
Milk	25.5			
MWW	68.5			
API	159.4			
TI	92			

Homo-Polled Homo-Black. A larger framed Honor calf out of great cow family. We didn't noticed this calf out in the pasture but since weaning he has showcased himself. If you need a calf with the look and an EPD profile, here he is, 13 traits in the top 25%. We make our breeding decisions on breeding strength to weakness and vice versa and sometimes the EPD's fall in place.

**L18**

**TRAX L18**

BD: 3/7/2023

Color	%Sim	Act. BW	205	P/S
R	PB SM	92	733	P
THSF LOVER BOY B33				
<b>ROCKIN H CAPTIVATE J75</b>				
ROCKIN H MS.CAROLINA				
<b>TRAX L18</b> - 4263438				
LRS PENDLETON 669Z				
<b>MISS TRAXS B479</b>				
TRAX MISS X34				
EPDs				
CE	13.3			
BW	-0.1			
WW	88.4			
YW	135.9			
MCE	7.5			
Milk	26.3			
MWW	70.3			
API	144.4			
TI	87.8			

Homo-Polled Nondilutor. ET captivate out of our Miss Trax's B479. mother to Trax's Red River and Trax's Bulldog owned by Kunkel Simmental. We will feature several sons out of her this year and this one is the first. A stud for sure, long, and stout. His EPD profile is pretty good too with 12 traits in the top 25%. Just a really nice calf.

**L19**

**TRAX L19**

BD: 3/8/2023

Color	%Sim	Act. BW	205	P/S
R	PB SM	84	727	P
TNT WHISKY RIVER B298				
<b>TRAX RED RIVER E84</b>				
MISS TRAXS B479				
<b>TRAX L19</b> - 4263437				
IPU RED DEPUTY 25C				
<b>TRAXS RED DUPTY H042</b>				
TRAXS MISS W RIVER D640				
EPDs				
CE	9.9			
BW	1.3			
WW	89.3			
YW	148.3			
MCE	6.6			
Milk	22			
MWW	66.4			
API	136.2			
TI	83.6			

Homo-Polled Nondilutor. K19 a moderated framed Red River son that is packed with muscle. He 's the bull that's always walking the fence line when the cows come to drink. K19 has a WW ratio of 103 at 727 lbs.



Miss Trax B479 • Dam of Lot L18



**L20**

**TRAX L20**

BD: 3/8/2023

Color	%Sim	Act. BW	205	P/S
B	PB SM	86	748	P

CDI INNOVATOR 325D  
**WHF INNOVATOR H548**  
 WHF BLACKHAWK 548E  
**TRAX L20** - 4263436  
 WS PROCLAMATION E202  
**TRAXS PROCLAMATION J171**  
 TRAXS MISS C THUNDER F807

EPDs	
CE	10.4
BW	1.6
WW	83
YW	126.8
MCE	6.5
Milk	25.8
MWW	66.8
API	147
TI	88.4

Homo-Polled Homo-Black. WHF Innovator out of a first calf heifer. Innovator was our pick of heifer bulls from Wayward Hills Farms. He calved easy and they grew real well. We expect our calves out of heifers to be as good as those from our mature cows, but yet they need to calf unassisted. Innovator did just that. K20 weighed 980 on Dec 2nd and was gaining 4.32/ day.

**L21**

**TRAX L21**

BD: 3/8/2023

Color	%Sim	Act. BW	205	P/S
B	PB SM	80	664	P

KOCH BIG TIMBER 685D  
**TJ HEISMAN 388F**  
 TJ 67D  
**TRAX L21** - 4263435  
 COLORADO BRIDLE BIT E752  
**TRAXS COLORADO H090**  
 TRAXS MISS ELEVATE F813

EPDs	
CE	13.5
BW	-0.6
WW	75.6
YW	116.2
MCE	8.6
Milk	28.3
MWW	65.9
API	154.9
TI	87.7

Homo-Polled Homo-Black. A Heisman calf that is a longer, taller type calf. We used Heisman for his extra growth and it seems to work. A little different style than we're use to but will work on smaller framed cows.

**L22**

**TRAX L22**

BD: 3/8/2023

Color	%Sim	Act. BW	205	P/S
B	PB SM	88	748	P

KOCH BIG TIMBER 685D  
**TJ HEISMAN 388F**  
 TJ 67D  
**TRAX L22** - 4263434  
 COLORADO BRIDLE BIT E752  
**TRAXS COLORADO H017**  
 TRAXS BLK DIAMOND C560

EPDs	
CE	11.2
BW	0.9
WW	81.1
YW	128.1
MCE	6.6
Milk	30.8
MWW	71.1
API	153.9
TI	87.7

Homo-Polled Homo-Black. TJ Heisman son that is a larger framed bull, out of a Colorado daughter. A Strong cow family going back to C560, who is the dam to lot L55. It's neat to see cow families that never miss and this is one of them. The dam to L22 has a WW ratio of 105 on 2 calves.

**L24**

**TRAX L24**

BD: 3/9/2023

Color	%Sim	Act. BW	205	P/S
R	PB SM	86	742	P

WS ALL ABOARD B80  
**BRIDLE BIT RED ROCK G9124**  
 BRIDLE BIT MISS A327  
**TRAX L24** - 4263432  
 TRAX RED RIVER E84  
**TRAXS RED RIVER J169**  
 TRAXS CAPTN MORGAN E776

EPDs	
CE	14.3
BW	0.3
WW	93.7
YW	147.5
MCE	9.1
Milk	24.6
MWW	71.2
API	155.8
TI	99.4

Homo-Polled Nondilutor. A Red Rock son out of a first calf heifer that got it done. The Red Rock bull is a true heifer bull, but he still has the ability to produce some growth. L24 carries the muscle pattern we like, thick deep and moves freely. His dam J169, ratioed 105 for WW on this guy.



L22 as a calf this summer

**BUILDING BLOCKS**  
*for success*

**L26****TRAX L26**

BD: 3/9/2023

Color	%Sim	Act. BW	205	P/S
B	PB SM	88	633	P

HTP/SVF DURACELL T52

**THSF LOVER BOY B33**

RP/MP RIGHT TO LOVE 015U

**TRAX L26** - 4263430

TRAX RED RIVER E84

**SSLA RIVER LADY G1903**

SSLA PRIME LADY E1703

EPDs	
CE	12.3
BW	0.3
WW	86.6
YW	132.1
MCE	6.9
Milk	27.8
MWW	70.8
API	144
TI	89.1

Homo-Polled Hetero Black. We used Lover Boy on a flush of the B479 cow and had some semen left so used it on other cows. The results were above our expectation. The calves have a nice muscle pattern and being Lover Boy is Hetero-Black, we have a mix of red and black calves out of him. L26 is a twin to L27.



Thankfully, the winter of 2023 is a distant memory!

**L27****TRAX L27**

BD: 3/9/2023

Color	%Sim	Act. BW	205	P/S
B	PB SM	88	783	P

HTP/SVF DURACELL T52

**THSF LOVER BOY B33**

RP/MP RIGHT TO LOVE 015U

**TRAX L27** - 4263429

TRAX RED RIVER E84

**SSLA RIVER LADY G1903**

SSLA PRIME LADY E1703

EPDs	
CE	12.3
BW	0.3
WW	86.6
YW	132.1
MCE	6.9
Milk	27.8
MWW	70.8
API	144
TI	89.1

Homo- Polled Hetero Black – Same footnotes as L26. This guy we put on another cow at 3 weeks of age. It's hard to compare the two, different cow different pasture different grass. What can I say?

**L28****TRAX L28**

BD: 3/9/2023

Color	%Sim	Act. BW	205	P/S
B	PB SM	96	881	P

KOCH BIG TIMBER 685D

**TJ HEISMAN 388F**

TJ 67D

**TRAX L28** - 4263428

COLORADO BRIDLE BIT E752

**TRAXS COLORADO H065**

TRAXS MISS BOISE F828

EPDs	
CE	10.6
BW	1.7
WW	92.1
YW	138.5
MCE	6.6
Milk	31.1
MWW	76.9
API	156.2
TI	93.8

Homo-Polled Homo Black. This guy is easy to find in the pen, big stout and attractive. Then look at the dam's production and you can see why. H065 dam comes from a long line of good cows. cow families truly make a difference and this one is no exception. This guy posted a 881 WW to ratio 114 and have 10 EPD's in the top 25%. Need I say more.

**L28**



**L30**

**L29**

**TRAX L29**

BD: 3/9/2023

Color	%Sim	Act. BW	205	P/S
R	PB SM	92	675	P

THSF LOVER BOY B33  
**ROCKIN H CAPTIVATE J75**  
 ROCKIN H MS.CAROLINA

**TRAX L29** - 4263427  
 WS ALL ABOARD B80  
**TRAXS ALL ABOARD H064**  
 TRAXS WALLBANGER E728

EPDs	
CE	12.3
BW	1.3
WW	97.9
YW	146.5
MCE	5.7
Milk	23.9
MWW	72.6
API	132.3
TI	91.6

Homo-Polled Nondilutor - Captivate son that's moderated framed but doesn't possess the power as some of the bigger bulls. Good calf if you're wanting to decrease some frame but still maintain thickness.

**L30**

**TRAX L30**

BD: 3/9/2023

Color	%Sim	Act. BW	205	P/S
R	PB SM	94	804	P

CDI HOMETOWN 246A  
**MFSR ROUNDUP 665H**  
 MFSR BIG SKY 351C

**TRAX L30** - 4263426  
 KS LITTLE JOHN C85  
**TRAXS LITTLE JOHN H020**  
 TRAXS MISS P BEEF D603

EPDs	
CE	7.1
BW	3.7
WW	94.4
YW	138.2
MCE	3
Milk	37.1
MWW	84
API	133.6
TI	88.1

Homo-Polled Nondilutor - Sired by the Roundup bull, who is owned by Kunkel Simmentals. This guy is blood red and has the power of Round Up himself. The H020 cow has a history of her own too, WW ratio on 2 claves of 112 and this calf ratioed 114 with a 804 WW. Believe this guy will add pounds to any calf crop and the females will be the bonus.

**L31**

**TRAX L31**

BD: 3/9/2023

Color	%Sim	Act. BW	205	P/S
R	PB SM	90	700	P

CDI HOMETOWN 246A  
**MFSR ROUNDUP 665H**  
 MFSR BIG SKY 351C

**TRAX L31** - 4263425  
 TRAX RED RIVER E84  
**TRAXS MISS R RIVER G950**  
 MISS TRAXS B434

EPDs	
CE	8
BW	3
WW	86.2
YW	133.1
MCE	5.7
Milk	31.4
MWW	74.2
API	129.4
TI	81.7

Homo-Polled Nondilutor. L31 is a Roundup out of a Red River daughter. He's a smaller framed guy that is full of muscle. He started out slow at weaning but has really kicked it in gear and looks the part. His dam ratios 100 WW on 3 calves.

**L32**

**TRAX L32**

BD: 3/9/2023

Color	%Sim	Act. BW	205	P/S
R	3/4 SM	86	718	P

RFS BULLETPROOF B42  
**TRAX'S BULL DOG G49**  
 MISS TRAXS B479

**TRAX L32** - 4263423  
 GW MAJOR MOVE 590E  
**TRAXS M MOVE G923**  
 TRAXS MISS W RIVER D640

EPDs	
CE	13.8
BW	-0.7
WW	78.5
YW	117.7
MCE	8.8
Milk	28.9
MWW	68.1
API	134.7
TI	81.2

Homo-Polled Nondilutor. L32 is a Trax's Bulldog Bulldog calf that is pretty salty. He carries a good muscle pattern on a bigger frame. This guy is a ¼ blood out of a Major Move female, good cow family.



**L35**

**L33**

**TRAX L33**

BD: 3/9/2023

Color	%Sim	Act. BW	205	P/S
R	PB SM	88	723	P

THSF LOVER BOY B33  
**ROCKIN H CAPTIVATE J75**  
 ROCKIN H MS.CAROLINA  
**TRAX L33** - 4263422  
 KS LITTLE JOHN C85  
**TRAXS LITTLE JOHN H018**  
 TRAXS RED POWER C554

EPDs	
CE	13.2
BW	0.9
WW	93.6
YW	132.6
MCE	8.1
Milk	32.2
MWW	78.8
API	140.4
TI	89

Homo-Polled Nondilutor. The cow family behind this guy is productive. The H018 cow has ratios of 108 WW and 109 YW. These ratios don't just happen without some genetics to back it up. Dark Red in color and somewhat moderate in frame size.

**L37**

**TRAX L37**

BD: 3/9/2023

Color	%Sim	Act. BW	205	P/S
R	PB SM	90	678	P

THSF LOVER BOY B33  
**ROCKIN H CAPTIVATE J75**  
 ROCKIN H MS.CAROLINA  
**TRAX L37** - 4263418  
 MFSR BRIDGER 843E  
**TRAXS MISS BRIDGER G976**  
 TRAXS MISS A334

EPDs	
CE	11.9
BW	1
WW	91.2
YW	129.2
MCE	6.1
Milk	29.6
MWW	74.9
API	141.2
TI	89

Homo-Polled Nondilutor. Captivate son out of G976 cow who traces back to A334. There's a history of this bloodline doing things right. This bull is easy to look at and has the foundation to create some powerful feeders not to mention the replacement females. His dam posts ratios of WW 105 YW 105.

**L35**

**TRAX L35**

BD: 3/10/2023

Color	%Sim	Act. BW	205	P/S
B	PB SM	92	769	P

HTP/SVF DURACELL T52  
**THSF LOVER BOY B33**  
 RP/MP RIGHT TO LOVE 015U  
**TRAX L35** - 4263420  
 LRS PENDLETON 669Z  
**MISS TRAXS B479**  
 TRAX MISS X34

EPDs	
CE	10.9
BW	0.8
WW	83.5
YW	127.5
MCE	5.6
Milk	26.2
MWW	67.7
API	143.5
TI	86.3

Homo-Polled Hetero-Black. We purposely used a hetero-black bull on this flush of our B479 red female. We felt her genetics are too powerful not to create some unique black offspring. L35 has been a stud all summer long out in the pasture and little has changed since weaning. We like what this guy has to offer to you, stout attractive and complete.



Rockin H Captivate ET heifer



## L38

### TRAX L38

BD: 3/12/2023

Color	%Sim	Act. BW	205	P/S
R	PB SM	98	708	P

TNT WHISKY RIVER B298  
**TRAX RED RIVER E84**  
 MISS TRAXS B479  
**TRAX L38** - 4263417  
 IPU RED DEPUTY 25C  
**TRAXS RED DUPTY H049**  
 TRAXS PENDELTON C552

EPDs	
CE	6.6
BW	4.2
WW	96.3
YW	160.2
MCE	3.8
Milk	25
MWW	72.9
API	128.4
TI	83.6

Homo-Polled Nondilutor. Red River out of Red Deputy Cow who's ratios are 106 WW 113 YW



## L39

### TRAX L39

BD: 3/13/2023

Color	%Sim	Act. BW	205	P/S
R	PB SM	104	813	P

RFS BULLETPROOF B42  
**TRAX'S BULL DOG G49**  
 MISS TRAXS B479  
**TRAX L39** - 4263416  
 WS ALL ABOARD B80  
**TRAXS MISS ABOARD G910**  
 SSLA ROCKET LADY E1722

EPDs	
CE	5.1
BW	5.6
WW	113.8
YW	174.7
MCE	1.2
Milk	26
MWW	82.7
API	117.9
TI	94.5

Homo-Polled Nondilutor This guy was gaining 5.22 lbs/day from weaning 10-7-23 to 12-2-23. From the day he was born until 12/2/23 this guy gained on average 3.6 lbs/ day. A little help came from his dam who ratios 111 WW 109 YW and L39 himself ratioed 119 WW. The genetics are there look at his growth EPD's.

## L40

### TRAX L40

BD: 3/13/2023

Color	%Sim	Act. BW	205	P/S
R	PB SM	88	730	P

CDI HOMETOWN 246A  
**MFSR ROUNDUP 665H**  
 MFSR BIG SKY 351C  
**TRAX L40** - 4263415  
 KS LITTLE JOHN C85  
**TRAXS LITTLE JOHN H050**  
 TRAXS MISS BULLETPROOF F824

EPDs	
CE	6.9
BW	3.2
WW	91
YW	133.2
MCE	1.9
Milk	36.5
MWW	81.8
API	128.6
TI	85.5

Hetero-Polled Nondilutor. A calf that catches my eye on a regular basis. He ratioed 107 WW and has kept going. Not the darkest bull in the pen but the right type and kind. His dam has ratios of 110 WW and 98 YW.



**L41**

**TRAX L41**

BD: 3/13/2023

Color	%Sim	Act. BW	205	P/S
R	PB SM	90	828	P

HTP/SVF DURACELL T52  
**THSF LOVER BOY B33**  
 RP/MP RIGHT TO LOVE 015U

**TRAX L41** - 4263414  
 LRS PENDLETON 669Z  
**MISS TRAXS B479**  
 TRAX MISS X34

EPDs	
CE	10.9
BW	1
WW	85.1
YW	129.8
MCE	5.6
Milk	26.2
MWW	68.5
API	143.9
TI	87.1

Homo-Polled Nondilotor. Another ET calf out of the great B479 cow. A red Lover Boy son with power to burn. He had an actual WW of 820 adjusted to 828 lbs. The B479 cow has ratios of BW 99 WW 102 YW 113 on her own calves, pretty easy to see why she became a donor. We have 5 ET calves out of her and all pretty salty, take your pick red or black.



Miss Traxs B479 • Dam of Lots L41 and L42

**L42**

**TRAX L42**

BD: 3/16/2023

Color	%Sim	Act. BW	205	P/S
B	PB SM	95	754	P

WS PROCLAMATION E202  
**KBHR GLOBAL J138**  
 BAR CK MS X38 106Z

**TRAX L42** - 4263413  
 LRS PENDLETON 669Z  
**MISS TRAXS B479**  
 TRAX MISS X34

EPDs	
CE	12.8
BW	0.1
WW	77.9
YW	126.2
MCE	8.6
Milk	24.6
MWW	63.3
API	160.3
TI	88.1

Homo-Polled Hetro-Black. Another ET son of the B479 cow that's hetro black. The Pendelton cow just keeps producing good offspring regardless of the mating. That's why this cow is an ET donor. We don't flush many females but the ones we do have to have a great track record, and the B479 cow does. She's the dam to Trax's River and Trax's Bulldog, both performance bulls.



L42 as a calf



**L43**

**TRAX L43**

BD: 3/16/2023

Color	%Sim	Act. BW	205	P/S
R	PB SM	98	807	P

HTP/SVF DURACELL T52  
**THSF LOVER BOY B33**  
 RP/MP RIGHT TO LOVE 015U  
**TRAX L43** - 4263412  
 LRS PENDLETON 669Z  
**MISS TRAXS B479**  
 TRAX MISS X34

EPDs	
CE	10.9
BW	1
WW	85.7
YW	130.6
MCE	5.6
Milk	26.2
MWW	68.8
API	144
TI	87.4

Homo-Polled Nondilutor. ET littermate to the L35 bull who is black. We used Lover Boy because he was hetro-black to get some reds, but yet blacks. This guy will have some friends, big stout and very attractive. The two ET brothers L35, L43 have caught our eye all summer and still do. Well number bulls.



Miss Traxs B479 • Dam of Lot L43

**L44**

**TRAX L44**

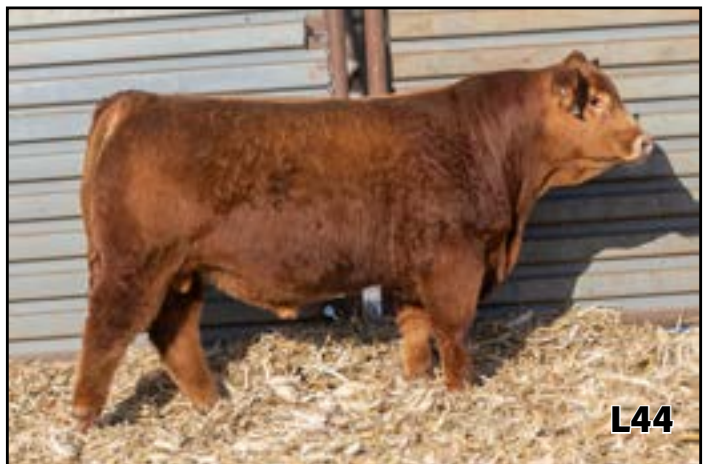
BD: 3/18/2023

Color	%Sim	Act. BW	205	P/S
R	PB SM	78	812	P

WS ALL ABOARD B80  
**BRIDLE BIT RED ROCK G9124**  
 BRIDLE BIT MISS A327  
**TRAX L44** - 4263410  
 WS ALL ABOARD B80  
**TRAXS ALL ABOARD J168**  
 TRAXS MISS R DUPTY F832

EPDs	
CE	14.7
BW	-0.9
WW	94.4
YW	139.7
MCE	7.8
Milk	25.8
MWW	72.7
API	161.7
TI	104.8

Homo-Polled Nondilutor. Interesting calf here, he's out of the slam-dunk heifer bull Bridle Bit Red Rock. The idea that heifer bulls can't have any performance, have just been proven wrong. Out of a first calf heifer she weaned off a 812 lb calf who ratios 115 WW. And the added bonus is he has 11 EPD traits in the top 25%. Got to like it.







**L45**

**TRAX L45**

BD: 3/19/2023

Color	%Sim	Act. BW	205	P/S
B	PB SM	84	742	P

HOOK'S BEACON 56B  
**KBHR HONOR H060**  
 WS MISS SUGAR C4  
**TRAX L45** - 4263409  
 HART 219E  
**TRAXS MISS HART G925**  
 TRAXS BOISE E783

EPDs	
CE	15.7
BW	-1.1
WW	82.4
YW	120.6
MCE	9.2
Milk	28
MWW	68.9
API	160.3
TI	91.7

Homo-Polled Homo-Black. Honor calf that's got an attractive look to him and a big hip. We do like the Honor bulls in our group they all have the muscle pattern we like. The G925 cow has ratios of 101 WW 3 and 97 YW 2 while L45 came in with 103 WW.

**L46** **TRAX L46** BD: 3/19/2023

Color	%Sim	Act. BW	205	P/S
B	PB SM	88	706	P

CLRS E-TRADE 405E  
**ART G906 RODE'S POWER HOUSE**  
 ART MISS E720  
**TRAX L46** - 4263408  
 RBS BOISE B63  
**TRAXS MISS BOISE F828**  
 TRAXS BLK DIAMOND C547

EPDs	
CE	10.2
BW	2
WW	82.4
YW	123.2
MCE	4.5
Milk	28.7
MWW	69.7
API	136.8
TI	80.2

Homo-Polled Homo-Black. A Rode Powerhouse calf that has good length, but is a little bit more refined. Powerhouse was a bull we bought to increase length and frame size and he does both well. L46's dam ratios 98 WW 4 and 101 YW 1.



**L47**

**TRAX L47**

BD: 3/19/2023

Color	%Sim	Act. BW	205	P/S
B	PB SM	108	704	P

HOOK'S BEACON 56B  
**KBHR HONOR H060**  
 WS MISS SUGAR C4  
**TRAX L47** - 4263407  
 HARVIE JDFWALLBANGER111X  
**TRAXS MISS WALL B D680**  
 R511

EPDs	
CE	8
BW	3.9
WW	90.5
YW	140.2
MCE	2.7
Milk	26.3
MWW	71.3
API	139.1
TI	86

Homo-Polled Hetero-Black. An Honor calf that's little taller and longer than some others. Good cow family in the D680 cow with ratios of 100 WW and 100 YW, on six calves.

**L49**

**TRAX L49**

BD: 3/21/2023

Color	%Sim	Act. BW	205	P/S
B	PB SM	96	707	P

CLRS E-TRADE 405E  
**ART G906 RODE'S POWER HOUSE**  
 ART MISS E720  
**TRAX L49** - 4263405  
 WLB BOUNTY HUNTER 365C  
**WLB 365C BOBBI-JO 412E**  
 WLB 359A SHEA 361C

EPDs	
CE	10.4
BW	2.4
WW	79.6
YW	120.3
MCE	4.8
Milk	23.9
MWW	63.4
API	121.7
TI	74.2

Homo-Polled Homo-Black. Powerhouse out of our BWF Canadian cow. The Powerhouse calves are longer bodied and taller type bulls. The Bobbi-Joe cows ratios 98 WW 103 YW. L49 is a calf with some grow left in him and should be a big boy.



**RANCH** • 605-885-6347  
**MIKE & TERRI TRAXINGER** • 605-294-7227  
**MICHAEL TRAXINGER** • 605-377-4110  
 E-mail: mtrax@nvc.net  
[www.TraxingerSimmental.com](http://www.TraxingerSimmental.com)

**THANKS FOR COMING** *to our sale!*

**L50****TRAX L50**

BD: 3/21/2023

Color	%Sim	Act. BW	205	P/S
B	PB SM	90	689	P

WS PROCLAMATION E202

**KBHR GLOBAL J138**

BAR CK MS X38 106Z

**TRAX L50** - 4263404

LRS PENDLETON 669Z

**MISS TRAXS B483**

TRAXS MISS HOOSIER Y115

EPDs	
CE	12.4
BW	1.4
WW	73.2
YW	112.4
MCE	8.8
Milk	27.9
MWW	64.3
API	151.6
TI	83.6

Homo-Polled Hetro-Black. This calf is out of Brittneys oldest cow B483 who posts ratios of 100 BW 102 WW 101 YW on 8 calves. L50 is a son of Global who sold for \$90000+ back couple years ago. Moderate framed good muscle pattern the right type.

**L52****TRAX L52**

BD: 3/22/2023

Color	%Sim	Act. BW	205	P/S
B	PB SM	86	776	P

CLRS E-TRADE 405E

**ART G906 RODE'S POWER HOUSE**

ART MISS E720

**TRAX L52** - 4263402

LFE THE RIDDLER 323B

**TRAXS MISS RIDDLER F819**

TRAXS PENDELTON C540

EPDs	
CE	9.4
BW	2.7
WW	91.6
YW	143.3
MCE	6
Milk	28.9
MWW	74.4
API	135.9
TI	85

Homo-Polled Homo-Black. These powerhouse calves are just coming into their own right now. They are the younger calves of the pen but don't over look these boys if you're looking for growth. Good cow family here too, check out dams ratios, BW 99 WW 107 YW 105 that's on 4 calves. Really like a cow that's this consistent.

**L53****TRAX L53**

BD: 3/23/2023

Color	%Sim	Act. BW	205	P/S
B	PB SM	90	706	P

CLRS E-TRADE 405E

**ART G906 RODE'S POWER HOUSE**

ART MISS E720

**TRAX L53** - 4263401

LRS WINDSOR 107B

**TRAXS WINDSOR E746**

TRAXS MISS A352

EPDs	
CE	7.9
BW	2.3
WW	76.8
YW	120.1
MCE	2.2
Milk	25.4
MWW	63.6
API	134.2
TI	78.6

Homo-Polled Homo-Black. Longer, taller calf compared to most of the older calves. That's how we have been utilizing Powerhouse on our smaller framed cows. We like 6 to 6.3 framed cows but yet we struggle to maintain a large enough frame to stay above 6 frame cattle. Just too many 5 or sub 5 framed bulls in stud catalogs.

***DVAuction***  
Broadcasting Real-Time Auctions

Never Miss An Auction Again!  
Watch & Bid online for FREE!

**Visit [www.DVAuction.com](http://www.DVAuction.com)  
and Register Today!**

For General Questions Please Contact Our Office:  
(402) 316-5460 or [support@dvauction.com](mailto:support@dvauction.com)





**L55**

**L54**

**TRAX L54**

BD: 3/22/2023

Color	%Sim	Act. BW	205	P/S
B	PB SM	88	769	P

WS PROCLAMATION E202  
**KBHR GLOBAL J138**  
 BAR CK MS X38 106Z  
**TRAX L54** - 4263400  
 LRS WINDSOR 107B  
**TRAXS WINDSOR E767**  
 MISS TRAXS Z270 BT

EPDs	
CE	10.7
BW	1.2
WW	76
YW	122.2
MCE	4.5
Milk	28.7
MWW	66.5
API	150.9
TI	85

Homo-Polled Homo-Black. This guy is not a typical Global calf, he's bigger and longer than most. Possible has a lot to do with his dam the E767 and her cow family. Brittney's cow. The Grand dam to L54 Z270 paid for most of Brittneys college, thank god. The E767 ratios are 103 WW 96 YW but yet her calf weaned at 769 lbs.

**L55**

**TRAX L55**

BD: 3/23/2023

Color	%Sim	Act. BW	205	P/S
B	PB SM	88	783	P

HOOK'S BEACON 56B  
**KBHR HONOR H060**  
 WS MISS SUGAR C4  
**TRAX L55** - 4263399  
 WS PROCLAMATION E202  
**TRAXS MISS PROCLAMATION G964**  
 TRAXS BLK DIAMOND C547

EPDs	
CE	13
BW	0.5
WW	88.7
YW	135.7
MCE	6.9
Milk	30
MWW	74.1
API	167.5
TI	96.1

Homo-Polled Homo-Black. I really like this Honor calf out of a Proclamation, it just seem to work. He's big enough so you won't down size you cattle and has some power. Doesn't hurt L55 that he's from a very powerful cow family. The G964 cow has ratios of BW 103 WW105 YW102. You'll find him.





**L56**

**L56**

**TRAX L56**

BD: 3/24/2023

Color	%Sim	Act. BW	205	P/S
B	PB SM	96	770	P

HOOK'S BEACON 56B

**KBHR HONOR H060**

WS MISS SUGAR C4

**TRAX L56** - 4263398

KS BLACK DIAMOND W992

**TRAXS BLK DIAMOND C560**

JBS MISS MO BETTER 418X

EPDs	
CE	10.9
BW	1.8
WW	86.6
YW	139.2
MCE	4.9
Milk	30.5
MWW	73.5
API	153.5
TI	89.1

Homo-Polled Homo-Black. This calf is very similar to lot L55 in type and kind. Without reading the ear tag you can't tell them apart. Again, a very strong cow family to back up this guy genetics. The C560 cow still looks as youthful as she did 5 years ago. She reads like the dean's list on ratios, BW 100 WW 105 YW 110 and that's on 8 calves.



**L57**

**TRAX L57**

BD: 3/24/2023

Color	%Sim	Act. BW	205	P/S
B	PB SM	92	802	P

HOOK'S BEACON 56B

**KBHR HONOR H060**

WS MISS SUGAR C4

**TRAX L57** - 4263397

HARVIE JDFWALLBANGER111X

**TRAXS MISS WALL B D683**

R511

EPDs	
CE	11.2
BW	1.9
WW	93.8
YW	141.5
MCE	5.4
Milk	30.5
MWW	77.2
API	147.7
TI	91.2

Homo-Polled Homo-Black, Another good Honor calf that has the right muscle structure. The D683 cow has never missed and has a WW ratio of 107 on 6 calves. Just a another strong cow family with longevity.

**L58**

**TRAX L58**

BD: 3/24/2023

Color	%Sim	Act. BW	205	P/S
B	PB SM	90	709	P

WS PROCLAMATION E202

**KBHR GLOBAL J138**

BAR CK MS X38 106Z

**TRAX L58** - 4263396

WS PROCLAMATION E202

**TRAXS MISS PROCLAMATION G963**

SRS S21

EPDs	
CE	12
BW	0.8
WW	75.6
YW	117
MCE	8.6
Milk	27.8
MWW	65.3
API	160
TI	89.2

Homo-Polled Homo-Black. A Global calf out of a performance cow family. The Proclamation females work on today's genetics and this cow's family does too. The G963 cow ratios 104 BW 103 WW 101 YW. Another calf that's coming on strong and sale day will shine.

**L59****TRAX L59**

BD: 3/25/2023

Color	%Sim	Act. BW	205	P/S
R	PB SM	88	685	P

EPDs	
CE	8.8
BW	1.6
WW	83.7
YW	126.4
MCE	4.8
Milk	34.1
MWW	75.7
API	139.4
TI	83.1

GW MAJOR MOVE 590E  
**KS JACKSON G60**

KS MISS SHAMWOW Z829

**TRAX L59** - 4263395

KS LITTLE JOHN C85

**TRAXS LITTLE JOHN H054**

TRAXS MISS WHISKEY RIVER F862

Homo-Polled Nondilutor. These Jackson sons are right for the times, their large enough to maintain your frame and the crop of bred heifers this year look impressive. Dams ratios are BW 95 WW 102. The Little John females are truly beautiful cows with excellent udders.

**L63****L60****TRAX L60**

BD: 3/25/2023

Color	%Sim	Act. BW	205	P/S
R	PB SM	94	885	P

EPDs	
CE	8.1
BW	3.4
WW	100.1
YW	152.9
MCE	3.9
Milk	33.8
MWW	83.6
API	137.7
TI	89.2

GW MAJOR MOVE 590E

**KS JACKSON G60**

KS MISS SHAMWOW Z829

**TRAX L60** - 4263394

RFS DELTA D122

**TRAXS MISS DELTA G962**

TRAXS MISS P BEEF D603

Homo-Polled Nondilutor. Another Jackson calf that's impressive in every direction. Look at his growth EPD's but more impressive his daughters maternal weaning weight. K60 is out of another great cow family that traces back to some of my best foundation cows. D603, B453, and then the S665, the SS Starlight cow. Performance females.

**L61****TRAX L61**

BD: 3/26/2023

Color	%Sim	Act. BW	205	P/S
B	PB SM	70	732	P

EPDs	
CE	16.4
BW	-2.5
WW	72.9
YW	111.8
MCE	8.1
Milk	33.5
MWW	69.6
API	156.2
TI	85.2

CLRS E-TRADE 405E

**ART G906 RODE'S POWER HOUSE**

ART MISS E720

**TRAX L61** - 4263393

COLORADO BRIDLE BIT E752

**TRAXS COLORADO G903**

TRAXS HOOSIER E788

Homo-Polled Homo-Black. We bought Powerhouse to do exactly what he did for this Colorado female, add some size. The Powerhouse bulls are mostly the younger bulls but they do not take a back seat to the older ones. You will be amazed come sale day on these individuals. Not everyone will like them, no 2 women buy the same dress either, but cowboys know when there's extra pounds, there's more cash to take to the bank sale day.

**L63****TRAX L63**

BD: 3/26/2023

Color	%Sim	Act. BW	205	P/S
B	PB SM	90	802	P

EPDs	
CE	9.9
BW	2.9
WW	93.8
YW	140.6
MCE	6.1
Milk	28.1
MWW	74.7
API	143.5
TI	88.8

CLRS E-TRADE 405E

**ART G906 RODE'S POWER HOUSE**

ART MISS E720

**TRAX L63** - 4263391

CCR COWBOY CUT 5048Z

**TRAXS MISS COWBOY G928**

TRAXS MISS PEND D641

Homo-Polled Hetro-Black. Being hetro-black might hold this calf back from bringing his true value, but whomever owns him will be compensated greatly. A stud is how I describe him, extremely long with depth of body to match. Talk about ratios this guy is 1 of 24 with 802 WW. No mistake here the G928 cow has ratios of BW 99 WW 107 YW 108 - another great cow family.



**L65** **TRAX L65** BD: 3/27/2023

Color	%Sim	Act. BW	205	P/S
B	PB SM	96	794	P

CLRS E-TRADE 405E  
**ART G906 RODE'S POWER HOUSE**  
 ART MISS E720  
**TRAX L65** - 4263389  
 LFE THE RIDDLER 323B  
**TRAXS MISS RIDDLER F860**  
 MISS TRAXS B482

EPDs	
CE	9
BW	3.7
WW	96.1
YW	147.6
MCE	5.7
Milk	26.9
MWW	74.7
API	131.7
TI	85.1

Hetero-Polled Homo-Black. These younger Powerhouse calves are amazing to watch develop. They start out just being growth looking and then all of a sudden they hit puberty and the pieces come together. These boys will get noticed sale day. The F860 cow has ratios of BW 105 WW 107 YW 93.

**L66** **TRAX L66** BD: 3/29/2023

Color	%Sim	Act. BW	205	P/S
B	PB SM	96	759	P

CLRS E-TRADE 405E  
**ART G906 RODE'S POWER HOUSE**  
 ART MISS E720  
**TRAX L66** - 4263388  
 CCR COWBOY CUT 5048Z  
**TRAXS MISS COWBOY G919**  
 TRAXS MISS PEND D638

EPDs	
CE	7.7
BW	4.3
WW	89.7
YW	138.5
MCE	3.9
Milk	29.2
MWW	73.8
API	135.8
TI	84.1

Homo-Polled Homo-Black. What can I say, another great cow family here and the calf shows it. It's taken me a life time to get these great cow families put together and now some of you might understand why this stubborn old German still loves what he does. I do realize my time is coming to an end, but I still love doing the matings. Good calf. Dams ratios, BW 108 WW 110 YW 113 on 3 calves.

**L71** **TRAX L71** BD: 4/8/2023

Color	%Sim	Act. BW	205	P/S
B	PB SM	88	741	P

CLRS E-TRADE 405E  
**ART G906 RODE'S POWER HOUSE**  
 ART MISS E720  
**TRAX L71** - 4263383  
 COLORADO BRIDLE BIT E752  
**TRAXS MISS COLORADO G907**  
 TRAXS GDC2 E759

EPDs	
CE	12.4
BW	1.1
WW	75
YW	111.3
MCE	6.3
Milk	29.6
MWW	66.8
API	139.7
TI	79.9

Homo-Polled Homo-Black. You need to check out these Powerhouse bulls what more can I say? Maybe buy more than one, they are that powerful. L71 is off of another Colorado dam. Dam's ratios BW 95 WW 101 YW 100. He works on Colorado daughters.

**L73** **TRAX L73** BD: 4/8/2023

Color	%Sim	Act. BW	205	P/S
B	PB SM	94	767	P

CLRS E-TRADE 405E  
**ART G906 RODE'S POWER HOUSE**  
 ART MISS E720  
**TRAX L73** - 4263381  
 RBS BOISE B63  
**TRAXS MISS BOISE F829**  
 MISS TRAXS B433

EPDs	
CE	9.7
BW	2.8
WW	82.9
YW	120.4
MCE	5.3
Milk	27.1
MWW	68.3
API	133
TI	79.5

Homo-Polled Homo-Black. Powerhouse on a Boise dam, same results as a Colorado mating. Cattle with some size but still have the muscle pattern we look for. Dams ratios BW 101 WW 102 and L73 came off his momma at 767 lbs.

**L74** **TRAX L74** BD: 4/13/2023

Color	%Sim	Act. BW	205	P/S
R	PB SM	88	707	P

TNT WHISKY RIVER B298  
**TRAX RED RIVER E84**  
 MISS TRAXS B479  
**TRAX L74** - 4263380  
 COME AS U R RED ROCKET  
**TRAXS RED ROCKET E756**  
 MISS TRAXS W990

EPDs	
CE	8.2
BW	3.3
WW	96.5
YW	150
MCE	7.2
Milk	22.4
MWW	70.4
API	126.4
TI	83.5

Homo-Polled Nondilutor. The youngest calf in the sale, and out of power genetics on both sides of the pedigree. First of December when we weighed him I didn't think he was big enough to be in the sale. Not anymore, he's been packing it on and has hit his stride. Dam packs a little more BW but hasn't been an issue. She makes up for it in WW. Dam's ratios BW 106 5 WW 105 5 and YW 92 1

# TRAXINGER

## SIMMENTALS



**RODE POWER HOUSE • ASA#: 3648400**

*Thank You*  
for your continued support  
and business!



**ROCKIN H CAPTIVATE J75 • ASA#: 3991776**



**KBHR HONOR H060 • ASA#: 3789447**



Selling several red & black ET sons out of **MISS TRAX B479**



**COLORADO BRIDLE BIT • ASA#: 3271382**



**MIKE & TERRI TRAXINGER • 605-294-7227**

**MICHAEL TRAXINGER • 605-377-4110**

E-mail: [mtrax@nvc.net](mailto:mtrax@nvc.net)

[www.TraxingerSimmental.com](http://www.TraxingerSimmental.com)

**DVAuction**  
Manufacturing Your Future Auctions

**TRAXINGER**  
SIMMENTALS

TIME SENSITIVE! PLEASE DELIVER IMMEDIATELY

Mike & Terri Traxinger  
11176 406th Ave.  
Houghton, S.D. 57449  
[www.traxinger.com](http://www.traxinger.com)

Return Service Requested



**ANNUAL PRODUCTION SALE**  
**FEB. 14, 2024**  
**AT THE RANCH • HOUGHTON, SD • 1 P.M.**